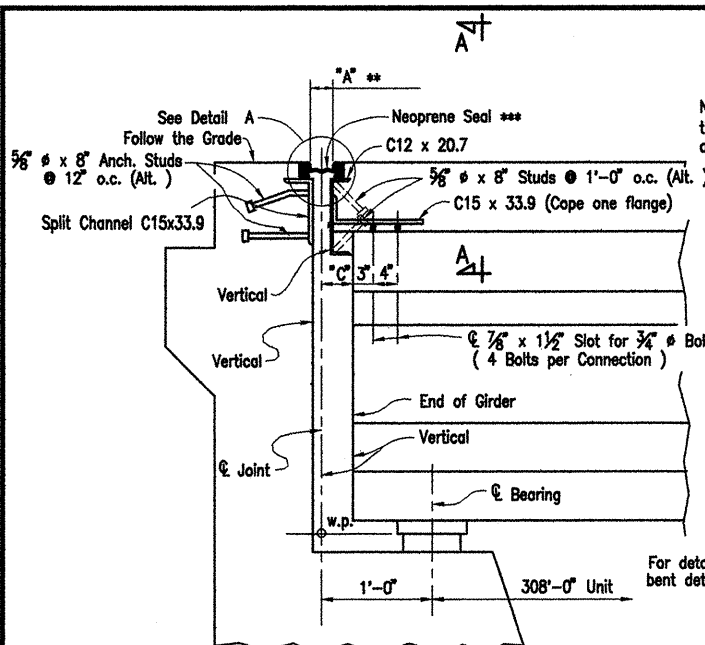
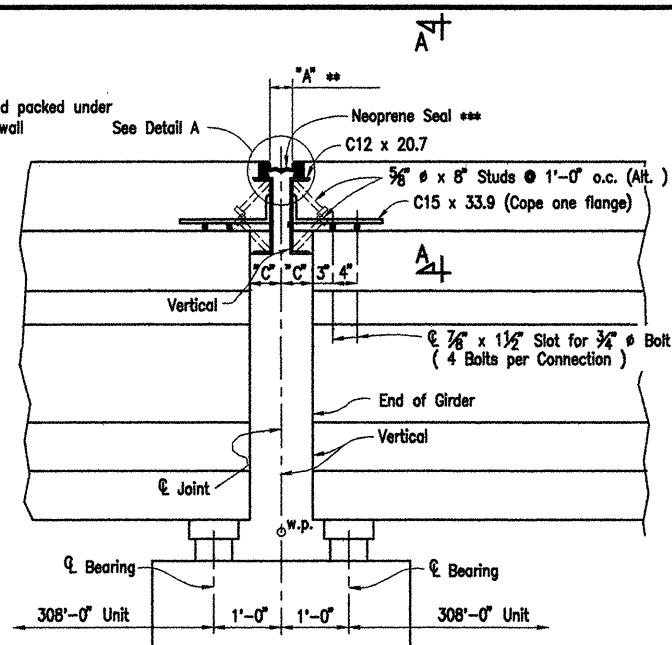


DATE REVISED	DATE FILMED	DATE REVISED	DATE FILMED	FED. ROAD NO.	STATE	FED. AID PROJ. NO.	SHEET NO.	TOTAL SHEETS
4/1/09					ARK.			
						JOB NO. 110503	97	233
						07027 EXP. JOINT		41902



**DETAIL OF JOINT AT END BENTS 1 AND 21**  
N.T.S.

Note: Concrete shall be hand packed under the joint armor in the backwall and in the span.



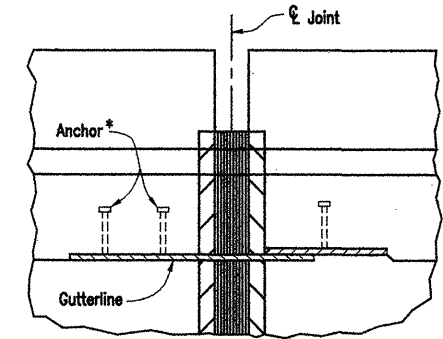
**JOINT DETAILS AT BENTS 5, 9, 13 AND 17**

\*\* 2 3/4" Strip Seal Joints shown on dwg's 41887 to 41888 represent the 2 3/4" Jt. @ 60°F.

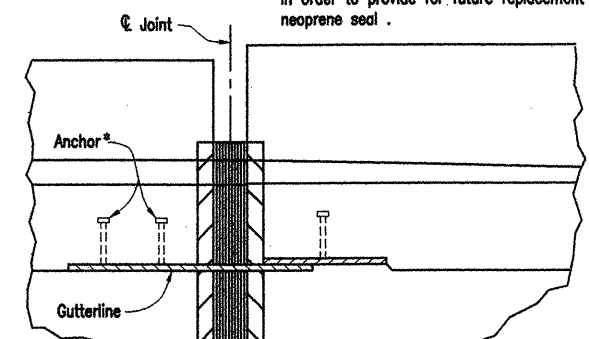
\*\*\* Strip Seal Joint Components shall be capable of moving between the Amin. @ 120°F and Amax. @ 60°F.

Note: Details of Joint turn-up in curb and parapet are general and show basic design controls only. See SP Job 110503, 'Armored Joint with Neoprene Strip Seal.'

\*The method of attachment of the slider plate assembly or similar device must be such that it may be removed in order to provide for future replacement of the neoprene seal.

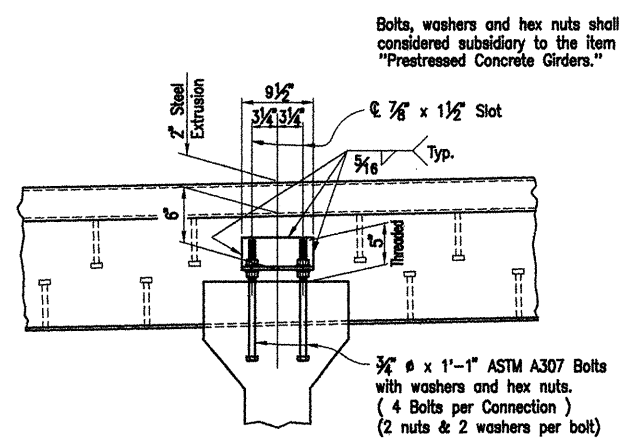


**SECTION D-D AT INTERMEDIATE JOINTS**  
N.T.S.

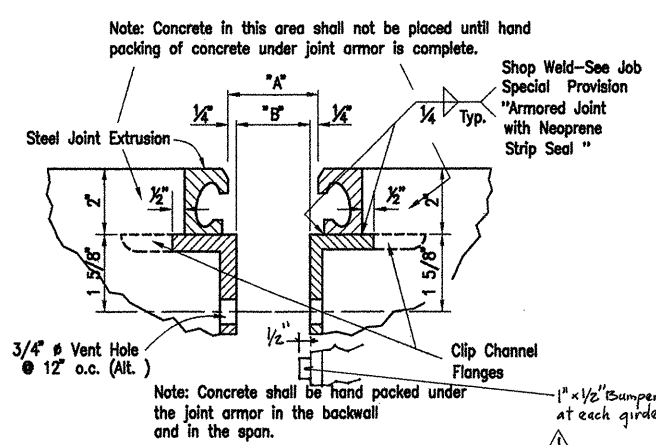


**SECTION D-D AT END BENTS**  
N.T.S.

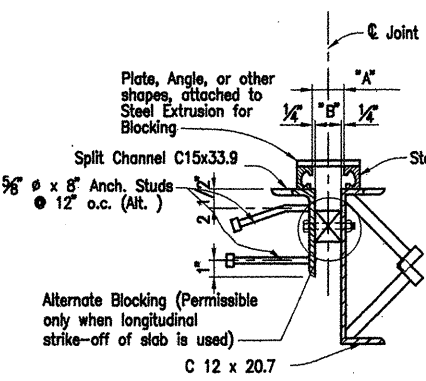
Note: Concrete shall be hand packed under the joint armor in back wall and in each span.



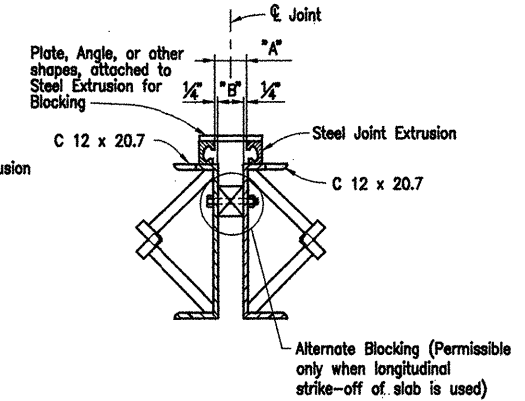
**SECTION A-A**  
N.T.S.



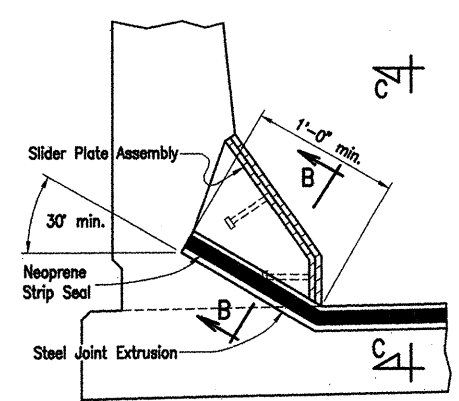
**DETAIL A**  
N.T.S.



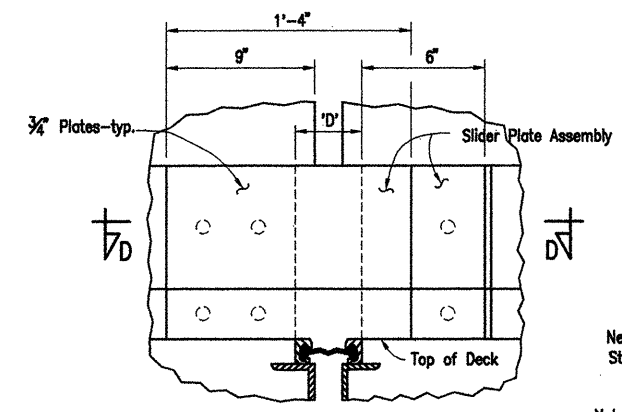
**DETAILS FOR BLOCKING EXPANSION JOINT DEVICE AT END BENT**  
N.T.S.



**DETAILS FOR BLOCKING EXPANSION JOINT DEVICE AT INT. BENT**  
N.T.S.

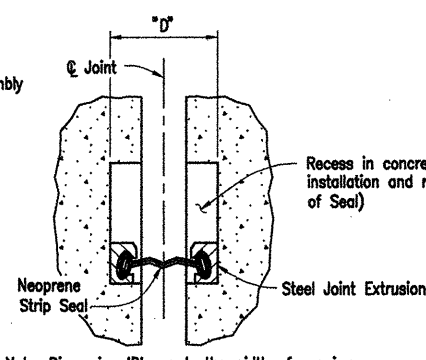


**DETAIL OF NEOPRENE SEAL AT CURB**  
N.T.S.



Note: Dimension 'D' equals the width of opening in parapet at curb to allow for removal or repair of joint.

**SECTION C-C**  
N.T.S.



Note: Dimension 'D' equals the width of opening in parapet at curb to allow for removal or repair of joint.

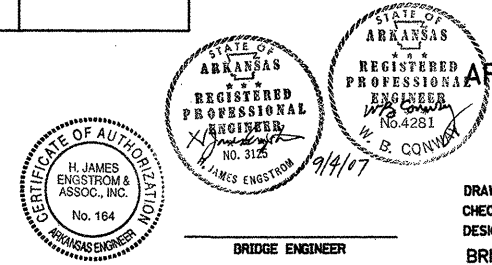
**SECTION B-B**  
N.T.S.

**STRIP SEAL JOINT DATA**

White River Relief Bridge Bent No.	Width Perpendicular to Jt. @ 24 Hr. Avg. Temp. ** of:					Width Perpendicular to Joint at 24 Hr. Avg. Temp.** of:				Width Perpendicular to Joint at 24 Hr. Avg. Temp. of 60° F.
	"A" min. 120° F.	80° F.	60° F.	40° F.	"A" max. 0° F.	80° F.	60° F.	40° F.		
1 & 21	2 1/16"	2 1/2"	2 3/4"	3"	3 7/16"	2"	2 1/4"	2 1/2"	6"	
5, 9, 13, 17	1 7/16"	2 5/16"	2 3/4"	3 3/16"	4 1/16"	1 13/16"	2 1/4"	2 11/16"	6"	

Note: Each expansion joint device shall be blocked in the Shop by the Fabricator to the dimension shown, and the blocking details shall be shown on the Shop Drawings. The blocking shall not be removed until the Slab on one side is complete. Blocking shall be placed within 2'-0" of each end of the device and with a maximum spacing of 8'-0". Removal shall be just before pouring the second side of the joint, as directed by the Engineer.

**ALTERNATE NO. 1**  
**WHITE RIVER RELIEF BRIDGE**  
**DETAILS OF EXPANSION JOINTS**  
**ROC ROE & WHITE RIVER RELIEF STRS. & APPRS. (CLARENDON) (F)**  
**MONROE COUNTY**  
**ROUTE 79 SEC. 13**  
**ARKANSAS STATE HIGHWAY COMMISSION**  
**LITTLE ROCK, ARK.**  
**Engstrom/Modjeski and Masters, Inc.**



SHOW BUMPER PLATE 4/1/09

DRAWN BY: PMR DATE: Sept. 07  
CHECKED BY: GPT DATE: Nov. 01  
DESIGNED BY: YQ DATE: Nov. 01  
BRIDGE NO. 07027 DRAWING NO. 41902